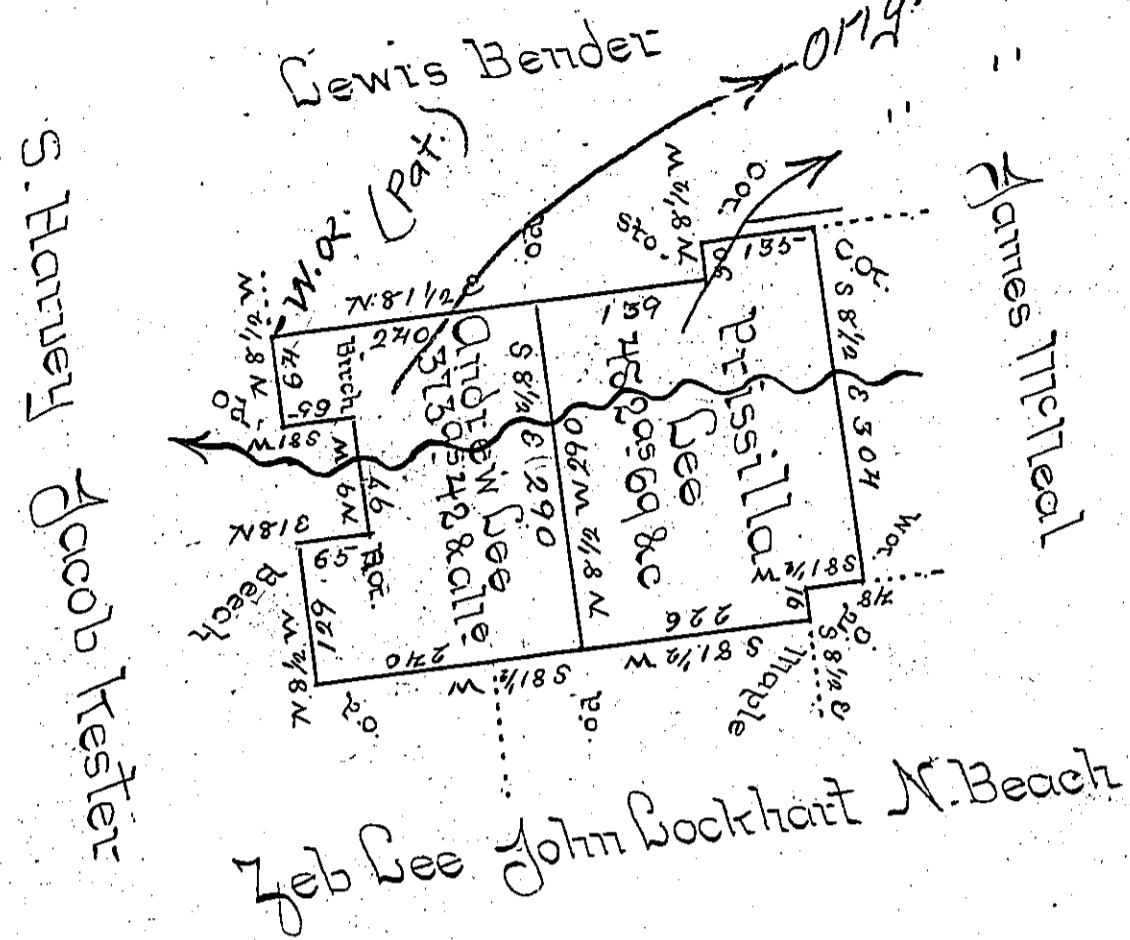


orig. sur. page 110.  
240109



Draft of two several tracts of land situate in Nescopeck Township Luzerne County adjoining land surveyed to Lewis Bender and others and also adjoining each other, containing the one Four hundred and eighty two acres & sixty nine perches & allowance and the other containing three hundred seventy three acres forty two perches & allowance, surveyed the 12<sup>th</sup> Aug<sup>r</sup> A.D. 1794 for Prissilla Lee and Andrew Lee by virtue of two several Warrants dated the 6<sup>th</sup> August A.D. 1792 Resurveyed the 20<sup>th</sup> & 21<sup>st</sup> day of November A.D. 1837 by Order of the Board of Property dated the 7<sup>th</sup> day of November A.D. 1837.

Zebulon H. Steven. D.S.

IN TESTIMONY that the above is a copy of the original remaining on file in the Department of Internal Affairs of Pennsylvania, made conformably to an Act of Assembly approved the 16th day of February, 1833, I have hereunto set my Hand and caused the Seal of said Department to be affixed at Harrisburg, this seventh day of August 1900.

James W. Patta  
Secretary of Internal Affairs.